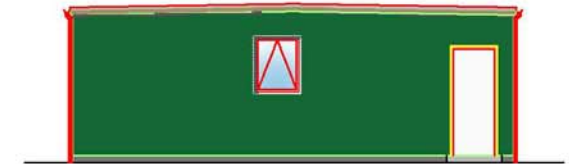


External Facing Materials/Colours

External Walls	Textured painted ply	Green
Windows	uPVC with 100mm restrictors	White
Doors	Colour coated steel with vision panel	White
Roof	Felt	Grey
Rainwater goods	Plastic	Black
Plinth	Timber/paving slabs	Natural



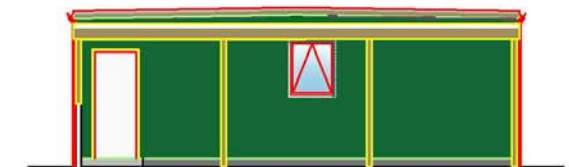
East Elevation



South Elevation



West Elevation



North Elevation

Appendix 02: Elevations

Application No: 8/16/0138 for retention of modular building for use as a pre-school. Previous ref 8/2013/008.

Highcliffe St Mark Primary School, Greenways, Highcliffe, Christchurch, Dorset BH23 5AZ